



ALLENDALE

UNITED METHODIST CHURCH

MARCH 15, 2026

3803 Haines Road North
St. Petersburg, FL 33703

(727) 527-6694

office@allendaleumc.org

www.allendaleumc.org

WELCOME

We are honored that you chose to worship with us today!

Allendale United Methodist Church is a *Reconciling Congregation*. We affirm the sacred worth of all people and strive to practice Christ's example of unconditional love without exclusion. All are welcome to participate fully in the life and ministries of this congregation. Whatever your race, ethnicity, economic situation, sexual orientation, gender identity or expression, background or belief, age or condition of ability, whether single or partnered, you are God's beloved and are welcome here. God calls us to acts of love, grace, and advocacy to promote healing and reconciliation. We are building a new Allendale: a place without barriers, a sanctuary for all.

Office Hours: Mon-Thu 9-4

If you have a special need, or you wish to visit with the pastor, please contact the office at (727) 527-6694 or office@allendaleumc.org.

Gender Pronouns: Asking and correctly using someone's preferred pronoun is one of the most basic ways to show your respect for their gender identity. When someone is referred to with the wrong pronoun, it can do harm.

Childcare/Nursery: Located in the courtyard, the first room to the right as you leave the sanctuary building. Children are welcomed and encouraged to stay in worship, even if they are noisy! The nursery is available beginning at 10 AM for children younger than kindergarten.

Children's activity sheets and fidget bags are available in the narthex.

Changing table is available in the Nursery.

Unisex/family restrooms are in the office hallway, accessible from the narthex, to the left as you exit the sanctuary.

The balcony is open for those wishing to have more social distancing.

Holy Communion is typically celebrated on the first Sunday of the month.

ASL Interpretation is available during worship to help make our service more inclusive and accessible. *ASL Version of our worship livestream:* www.allendaleumc.org/asl

UPCOMING EVENTS

- Mar 14-17 Youth Spring Break Trip to Atlanta
- Wed Mar 18 Wednesday Night Dinners (Community Center) 5 PM *(Every Wednesday)*
- Sun Mar 15 Baptism of Murphy Aaron Giblin (Sanctuary) 10:30 AM
- Sun Mar 22 CIW Farmworker Justice & Culture event (Community Center) 12 PM
Learn about the Fair Food Program
- Fri Mar 27 Drag Bingo at Allendale benefitting Girls Rock St Pete (Sanctuary) 6 PM
- Sat Mar 28 Counseling Center Mural Community Paint Day (North Parking Lot) 9AM-2PM
- Thu Apr 2 Maundy Thursday Service (Sanctuary) 6 PM
- Fri Apr 3 Good Friday Service 12 PM
- Sat Apr 4 Easter Egg Hunt 10 AM
- Sun Apr 5 Easter Sunrise at Crescent Lake Park 7 AM
Easter Service with Choir (Sanctuary) 10:30 AM
- Sun Apr 12 Easter Drag-led Worship Service (Sanctuary) 10:30 AM
- Thu Apr 16 FAST Nehemiah Action (2281 State Rd 580, Clearwater) 7 PM
- Sun Apr 19 United Women in Faith Gathering (Wesley Room) 12 PM
- Sat Apr 25 United Women in Faith Cornerstone Wonder Walk (Crescent Lake)

Get more information about our upcoming events by visiting: www.allendaleumc.org/events

WORSHIP NOTES

TODAY'S LITURGIST:

SUZANNE STAMBAUGH (she/her/hers) was born and raised in St. Petersburg, Florida. She earned her bachelor's degree from the University of Florida and her graduate degree from the University of Tennessee. She lived in Chicago for two years before returning to St. Pete in 2013. She is happy to live in her hometown near her parents, brother, and much of her extended family. She works as a licensed psychologist at the University of South Florida St. Petersburg Wellness Center. She loves spending time with her husband, Jared Bunn, and their beloved rescue cat, Millie. She also enjoys reading, podcasts, and documentaries.

TODAY'S MUSICIANS:

piano - Tru Mizzell
vocals - Beth Heisel

Contact tru@allendaleumc.org to join our band or Easter choir

ANNOUNCEMENTS

ANTI-DEATH PENALTY VIGIL: Join Allendale United Methodist Church and Floridians for Alternatives to the Death Penalty for a prayer vigil opposing the execution of Michael King on Tuesday, March 17, from 5-6 PM at the corner of Ulmerton Road and 49th Street North. Signs will be provided. *Petitions and details are available at fadp.org.*

SOCIAL JUSTICE TEAM MEETING: Allendale's Social Justice team will meet Tuesday, March 17, at 6:30 PM in the Hybrid Room (later start time due to the execution vigil). The group will discuss ongoing and future justice efforts. Geneva Nelson of *Celebrate Outreach!* will conclude the meeting with a workshop on helping people complete forms for free bus passes. Everyone is welcome to join this meeting.

COALITION OF IMMOKALEE WORKERS: After worship next Sunday, stick around for a farmworker justice and culture program hosted by the CIW. Learn about the Fair Food Program and enjoy some delicious snacks.

STEWARDSHIP

PRAYERS

BIRTHDAYS:

Nick Carey	Mar 16
Jeannine Smith	Mar 17
Bill Munette	Mar 21
Emily Sands	Mar 24
Madelyn Isoma	Mar 27
Makayla Brown	Mar 29
Tru Mizzell	Apr 1
Lashley Marks	Apr 7
Diane Gibson	Apr 12

Birthday missing? Please contact the office

CONNECT WITH A PASTOR:

Rev. Andy Oliver, Pastor
Office hours: Tue - Fri *make an appointment at www.allendaleumc.org/andy*

Rev. David Franks, Minister of Pastoral Support
Office hours: Tue 11-2 | Thu 4-7 *make an appointment at www.allendaleumc.org/david*

LICENSED THERAPISTS AND COUNSELORS:

available at Allendale's Counseling Center
Visit www.allendaleumc.org/counseling

PRESENCE

Previous Sunday: 125 in-person, 1,127 online
Live stream: www.allendaleumc.org/online

WANT TO JOIN ALLENDALE?

The next opportunities:
Sun Apr 12 at 10:30 AM
Sign-up at: www.allendaleumc.org/join

GIFTS

Give online: www.allendaleumc.org/give
Text-to-give: Text amount to 727-312-0808
Buy a shirt: www.allendaleumc.org/shirts



Give Online now by scanning this code with your phone's camera.

OFFICE VOLUNTEERS: we are seeking office volunteers to help count money on Tuesday mornings. *If you are interested in helping, contact the church office: 727-527-6694 or office@allendaleumc.org.*

WITNESS

A MURAL IS COMING TO ALLENDALE:

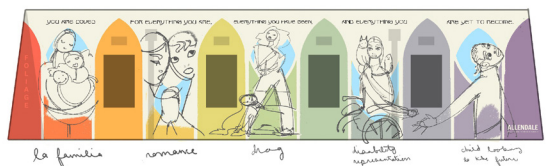
Allendale's Counseling Center building is getting a mural—and you're invited to help bring it to life.

Artist Cristi López has designed a piece that reflects the spirit of the space. The mural will celebrate mental health, honoring people of many backgrounds, ages, and conditions of ableness. At the heart of the design is a simple message: ***"Know that you are loved for everything you are, everything you have been, and everything you are yet to become."***

To help make the mural a true community creation, we're hosting a Community Paint Day on Sat, March 28, from 9 AM to 2 PM.

Allendale's own Eric Schlecht has been preparing the building for the art installation by filling cracks, cleaning, and putting on a fresh base coat of paint. Volunteers will help paint some of the large background color blocks that form the foundation of the artwork. No experience is necessary—just come ready to contribute to something beautiful.

This mural will be a visible reminder of care, healing, and belonging for everyone who passes by or seeks support through the counseling center. We hope you'll join us in helping create it.



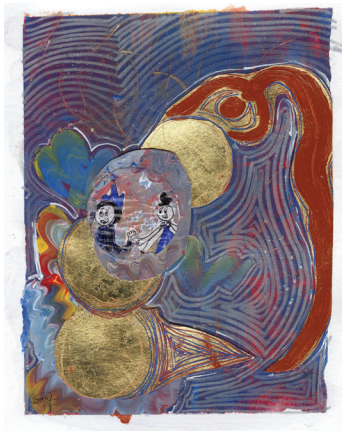
**4TH
SUNDAY
OF LENT**



**protection & care for
the vulnerable**

Let us know you are here by going to www.allendaleumc.org/here or by filling out the attendance pad in your row.

- TELL ME SOMETHING GOOD THEME SONG** **Britt Kusserow**
Improbable | Britt Kusserow |
- WELCOME** **Rev. Andy Oliver**
- SONG** **Allendale Band**
Holy, Holy, Holy, Love Now Ascending | Jim Burklo |
- CALL TO WORSHIP & AFFIRMATION OF FAITH** **Suzanne Stambaugh**
Improbable (Reprise) | Britt Kusserow |
- PEACE, HOPE, and JUSTICE & THE LENTEN WREATH** **Congregation**
- SONG** **Allendale Band**
Strong, Gentle Children | Dan Damon |
- TIME WITH CHILDREN & BAPTISM** **Congregation**
Murphy Aaron Giblin
God Claims You | Stanley M. Farr |
- PRAYER OF CONFESSION & WORDS OF FORGIVENESS** **Rev. David Franks**
Improbable (Reprise) | Britt Kusserow |
- OFFERING** **Congregation**
Child Of God | Mark A. Miller |
give online at www.allendaleumc.org/give
- PRAYERS OF THE PEOPLE** **Rev. David Franks**
The Lord's Prayer | Mark Miller |
- POEM** **Rose Cervantes**
Unwritten Agreement | Rev. Sarah A. Speed |
- SONG** **Allendale Band**
See the Precious Children | Anna Strickland, B. F. White |
- PRAYER FOR ILLUMINATION & SCRIPTURE** **Suzanne Stambaugh**
Deuteronomy 24:17-22, Matthew 19:13-15
- SERMON** **Rev. Andy Oliver**
- SONG** **Allendale Band**
Holy Is The Refugee | Mark A. Miller |
- CONNECTING WITH THE COMMUNITY** **Congregation**
- BENEDICTION** **Suzanne Stambaugh**
- POSTLUDE** **Allendale Band**



"Let the Little Children Come" by Carmelle Beaugelin Caldwell

INSPIRED BY MATTHEW 19:13-15

The disciples, wanting to protect Jesus' status as a respected teacher, tried to turn the children away. But Jesus redirects them—and us—away from control and toward the open, honest spirit of a child, reminding us that this is who the kingdom belongs to.



"Fuera ICE" by Rev. Nicolette Faison

INSPIRED BY DEUTERONOMY 24:17-22

I still believe in humanity. When people in Gaza prepared simple meals to break their Ramadan fast amid violence, I saw something good. When neighbors joined our vigil for the disappeared, I saw something good. The good is people choosing empathy and compassion in hard times. That is what Christ calls us to be.

*Liturgy by A Sanctified Art, LLC
Portions adapted by Allendale UMC*

- Rev. Andy Oliver, Pastor | andy@allendaleumc.org
- Rev. David Franks, Minister of Pastoral Support | david@allendaleumc.org
- Cameron Helwege, Creative Director | cameron@allendaleumc.org
- Bruce Bordeaux, Director of Operations | bruce@allendaleumc.org
- Diana Ong, Church Administrator | diana@allendaleumc.org
- Tru Mizzell, Director of Music Development | tru@allendaleumc.org
- Dylan Dames, Music and Organizing Associate | dylan@allendaleumc.org
- Campbell Horn, Dylan Dames | Youth Directors
- Bill Lee | Organist
- Maddie Johnson | Sign Language Interpreter
- Michaela George, Erin Giblin, Courtney Ross, | Nursery Attendants
- Dr. Kate Pravera | Theologian in Residence
- All of us in the Congregation | Ministers of the Gospel

THIS WEEK

Sun Mar 15

9 AM Adult Sunday School Class (Hybrid)
10:30 AM Worship Service (Sanctuary)

Mon Mar 16

9 AM Tai Chi (Community Center)

Tue Mar 17

2 PM Pilates (Bill W/Nursery)

Wed Mar 18

5 PM Dinner at Allendale (Community Center)
6 PM Scripture Class (Hybrid Room/Zoom)

Thu Mar 19

Fri Mar 20

Sat Mar 21

Sun Mar 22

9 AM Adult Sunday School Class (Hybrid)
9 AM Grief Support Group (Wesley)
10:30 AM Worship Service (Sanctuary)

Recovery and Support Groups meet often at Allendale and are now listed on their own calendar: www.allendaleumc.org/recovery.

CLASSES & COMMUNITY

Grief Support Group - 3/22 at 9 AM
This group meets every other Sunday

"Grace Can Lead Us Home: A Christian Call to End Homelessness" by Kevin Nye
In-Person Adult Sunday School Class- Sun at 9 AM
Virtual Class via Zoom - Mon at 6 PM
Join via Zoom: allendaleumc.org/mondayclass

Young Adult Discord - Online Group
Join at www.allendaleumc.org/youngadults

Stand For Democracy - Mon at 5 PM
NW corner of 22nd Ave N and 34th St N

Weekly Immigration Vigil w/ FLIC - Sun at 4 PM
at the Pinellas County Courthouse in Clearwater
Register at flic.fyi/727vigil.

Social Justice Team - Tue Mar 17 at 6:30 PM

United Women in Faith - Sun Apr 19 at 12 PM

United Methodist Men/Non-Binary - 3rd Thu at 6 PM

DINNER MENU

Dinner starts at 5 PM in the Community Center. \$10 or whatever you can afford. Vegetarian or Vegan options are always available.

Wed Mar 18

Corned Beef & Cabbage, Potatoes & Carrots,
Fruit, Rye Bread, Dessert